



The Palette

Burlingame Art Society May 2014

2013/2014
Committee Chairs

PRESIDENT

Susan Pizzi 650-342-0604

pizziellis121@comcast.net

VICE PRESIDENT/PROGRAMS

Gay Gentry 650-573-9832

artbygay@gmail.com

2nd VP & RECORDING SECRETARY

Sally Patton 650-343-0115

spatten9@gmail.com

TREASURER

Dawn Mulliken 650-342-5554

demulliken@aol.com

MEMBERSHIP

Rose Nieponice 650-401-8784

rose.nieponce@sbcglobal.net

PUBLICITY

Pat McMorrow 650-348-5049

pbackdoorart@aol.com

EXHIBITS

Pat Knowles 650-347-9404

flrgirl@mac.com

Diana Day-Glynn 650-678-0850

dayglynn@aol.com

HOSPITALITY

Pat McMorrow 650-348-5049

pbackdoorart@aol.com

Carmel Adams 415-810-7719

adamscj@sutterhealth.org

WEBSITE EDITOR

Sofia Medeiros 650-689-5111

smede98@gmail.com

PALETTE EDITOR

Jenee` Crayne

monopodlove@mac.com

MONTHLY AWARDS

George Dumandan 650-284-8112

gdumandan1@gmail.com

Karen Orton 650-343-4300

kkorton@aol.com

PAST PRES. AND SPRING SHOW CHAIR

Pat Barr 650-344-8972

pjmacbarr@sbcglobal.net

ADVISOR

Don Mulliken 650-342-5554

damulliken@aol.com

UP Next... Will Maller

demonstrates watercolors!



"I have had a love of the visual creative experience since childhood, with art being first a way of getting into trouble, then a way of staying out of trouble, then just a natural part of who I am. My work has always begun with observation and a representational impulse. Then on to the challenge of line, shape, value, and color, blended with design principles and varying degrees of abstraction to arrive at yet another compelling visualization. A new reality is created, one which begins with observation but proceeds in its own unique direction. My artistic efforts define a body of work that has a very personal reality. Fused into the drawing and paint media are both my struggle and delight in the creative process. Each painting begins as an invitation, proceeds as an adventure, and ends as a gift—whether a joy in itself or a lesson learned, whether just for me or to be shared with others. Then I wait patiently for that next invitation."

Next B.A.S Meeting
Wednesday, May 7, 2014
7:00 - 9:00 p.m
Lions Hall. 900 Burlingame Ave., Burlingame
Members, guests and the
general public are invited.
Light refreshments will be served.

The Committee Chairs will meet at
the home of Susan Pizzi on
Tuesday, May 13, 2014 at 4:30 pm

BAS' Pat BeBeau won
Honorable Mention in a
Los Angeles competition
out of
nearly 1000 entries. The
painting she entered was
an exact copy of a photo
from
20,000 ft. up the Colorado
Dry Riverbed in a series
called Earthmarks that Pat
created. Congratulation
Pat.



New Palette Editor

Jenee Crayne, though not a member of
BAS, has been our Palette editor since
September 2012. Jenee is a photographer
who started coming to our monthly
meetings to photograph our winning
paintings. When the position of Palette
editor became available, she volunteered
Thank you Jenee for two years of
wonderful Palettes.

Please visit Jenee's website:
www.jdcraynephoto.com

Our new editor will be Diana Day Glynn.
Please send Diana items that you wish to
be included in the Palette.

dayglynn@aol.com



April's Ribbon Winners!

Photographs by: Diana Day Glynn



First Place

"Untitled" by Diane Miller



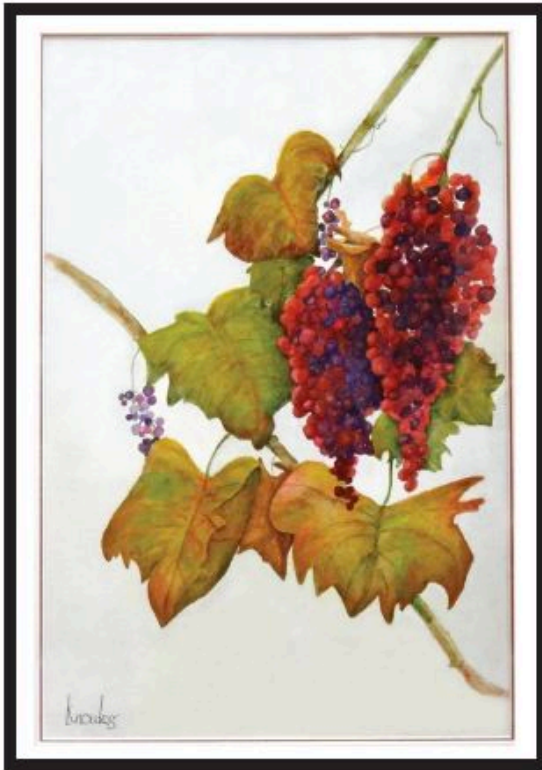
Second Place

"Hibiscus" by Gloria Mueller



Third Place

"Freckles" by Pat Barr



Popular Choice & Honorable Mention
"Fall Jewels" by Pat Knowles



Honorable Mention
"Belly Dancer" by Baidaa Weli



Honorable Mention
"Molly" by Mary Jo St. John

Happy Summer BAS!

BURLINGAME ART SOCIETY
P.O. BOX 1754 BURLINGAME, CA 94010



WWW.BURLINGAMEARTSOCIETY.ORG