



# Burlingame Art Society

## May 2013

### 2012/2013 Committee Chairs

#### PRESIDENT

Pat Barr 650-344-8972

pjmacbarr@sbcglobal.net

#### VICE PRESIDENT/PROGRAMS

Gay Gentry 650-573-9832

artbygay@gmail.com

#### 2nd VP & RECORDING SECRETARY

Susan Pizzi 650-342-0604

pizziellis@comcast.net

#### MEMBERSHIP

Rose Nieponice 650-401-8784

rose.nieponce@sbcglobal.net

#### TREASURER

Dawn Mulliken 650-342-5554

demulliken@aol.com

#### PUBLICITY

Pat McMorrow 650-348-5049

pbackdoorart@aol.com

#### EXHIBITS

Pat Knowles 650-347-9404

flrgirl@mac.com

Diana Day-Glynn 650-678-0850

dayglynn@aol.com

#### HOSPITALITY

Nancy Stirm 650-579-2794

painting-crow@comcast.net

#### HOSPITALITY ASSISTANT

Marilynne Genis 650-692-0409

mgenis@me.com

#### WEBSITE EDITOR

Sofia Medeiros 650-689-5111 smede98@gmail.com

#### PALETTE EDITOR

Jenee` Crayne monopodlove@mac.com

#### MONTHLY AWARDS

Brian Harvey 650-347-7252

hopeandbrian605@gmail.com

#### HISTORIAN

Fred Sinclair 650-343-4453

#### ADVISOR

Don Mulliken 650-342-5554 damulliken@aol.com

#### BAS SCHOLARSHIP

Teresa Silvestri 650-654-2766 TeresaPPup@aol.com

Up Next...Belinda Lima  
Abstract Color Artist!

. . .

BURLINGAME ART SOCIETY'S  
*Spring Art Show*  
May 11 & 12, 2013  
1426 Burlingame Avenue, Burlingame

. . .

The Peninsula Museum of Art

Opened on March 16  
Please drop by to visit at  
1777 California Drive, Burlingame  
and go to  
[www.peninsulamuseum.org](http://www.peninsulamuseum.org)  
for additional information.

. . .

Next B.A.S Meeting  
Wednesday, May 1, 2013  
7:00 - 9:00 p.m  
Lions Hall. 900 Burlingame Ave., Burlingame  
Members, guests and the  
general public are invited.  
Light refreshments will be served.

# A message from the President...

The SPRING ART SHOW is our next BIG event. The deadline for submitting your application is at the May 1st meeting. Please be a part of the group's wonderful annual opening to the public. Set up date is May 10. Your art will be accepted from 10-12. After all the work is hung, the show will be judged and ribbons awarded. At 10am Saturday May 11 we will open our doors to the public. As requested there will be an opportunity for all attendees to vote for popular choice. The winner will be announced at the end of the show on Sunday. A sign-up sheet will be passed at the May 1st meeting for volunteers to help in several ways and to staff the show. Hopefully you are all mailing flyers to all your friends. (See the website for a copy you can duplicate.)

Very important to the success of the Spring Art Show are our ever-popular Basket Raffle and the Silent Auction. Please help with these two segments with the purchase of raffle tickets and donating an item to the auction. You will have the opportunity to bid on the silent auction when you visit the show. Part of the money raised from these two venues goes to support our Scholarship Awards.

We will, of course, have our usual demos at the May 1st meeting and the June 5th meeting. The Committee meetings will be May 4th and June 11 at 393 Georgetown San Mateo, at 4:30pm.

VERY IMPORTANT is the selection of a new President! I have sincerely enjoyed my 2 years as your president. Hopefully I am leaving office with some important changes in place. I have been blessed with a wonderful roster of chairmen who also love this organization and work hard to help it prosper. These fantastic people have

signed on to work with the next president. And herein lies the rub, NO ONE HAS STEPPED FORWARD TO BE OUR NEXT PRESIDENT! It would be a very sad day that necessitates the dissolution of the society for lack of a president. I know there are several members who can do this job easily, you just have to feel the commitment and step forward. My term ends after the June meeting, at that time someone must take up the gavel. Please consider stepping forward.

See you May 1st,

Pat



. . .

## Plan Ahead:

May: Belinda Lima Abstract Color Artist (5/1/13)

May is also our Spring Art Show! 11th & 12th

. . .

## The April Committee Meeting

May 7, 2013

4:30pm

393 Georgetown, San Mateo

. . .

## New for 2013

Free Website Links are now included with your BAS membership.

If you would like to include your "art only" website, please contact Sofia Medeiros

[Smede98@gmail.com](mailto:Smede98@gmail.com)

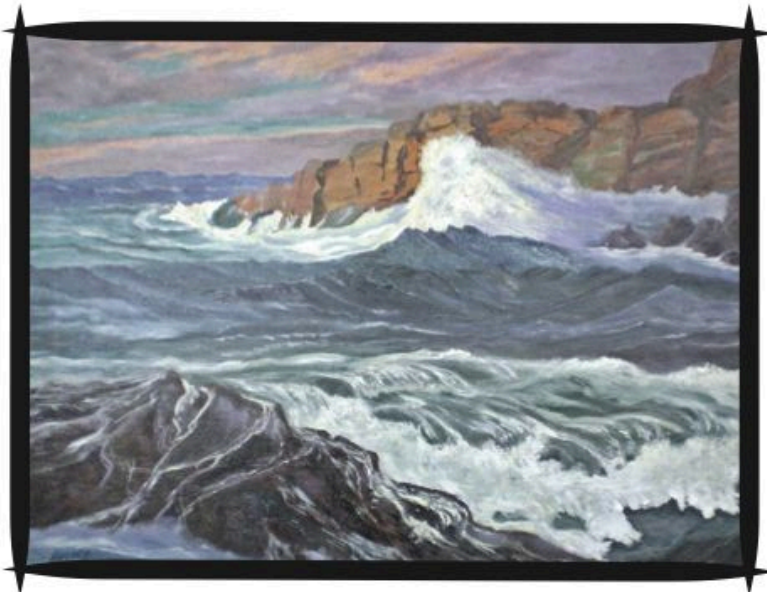
. . .

Images are owned by the artists, and may not be copied or used in any way without the permission of the artist.



First Place & Popular Choice  
"Old Guard" by: Joe Christensen

Photographs by: Diana Day Glynn



Third Place  
"Flood Tide: by: Clifford Asvilt

# April Ribbon Winners!



Second Place  
Untitled by: Susan Lofthouse

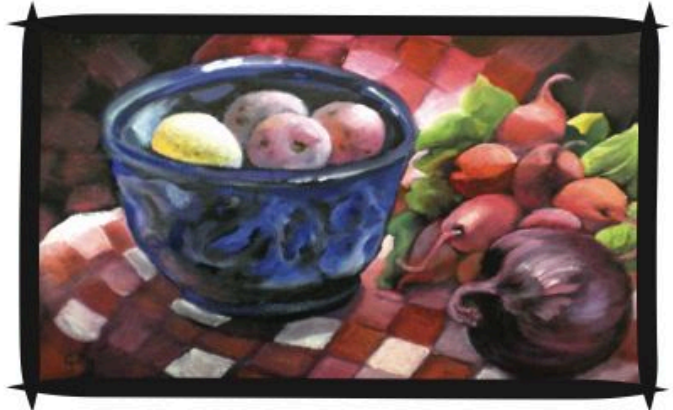
## Honorable Mention's



"Old Country Kitchen"  
by: Gracia Bovis



"Camelia" by: Carmel Adams



"Beets" by: Gay Gentry



Tara Norwood did the critique and judged the paintings that night. She brought along her husband who was so nice that he held up each and every painting, for us to view, as she critiqued it. Thank you!!

BURLINGAME ART SOCIETY  
P.O. BOX 1754 BURLINGAME, CA 94010



[WWW.BURLINGAMEARTSOCIETY.ORG](http://WWW.BURLINGAMEARTSOCIETY.ORG)