



# The Palette

Burlingame Art Society

June 2013

## 2012/2013 Committee Chairs

### PRESIDENT

Pat Barr 650-344-8972

pjmacbarr@sbcglobal.net

### VICE PRESIDENT/PROGRAMS

Gay Gentry 650-573-9832

artbygay@gmail.com

### 2nd VP & RECORDING SECRETARY

Susan Pizzi 650-342-0604

pizziellis@comcast.net

### MEMBERSHIP

Rose Nieponice 650-401-8784

rose.nieponce@sbcglobal.net

### TREASURER

Dawn Mulliken 650-342-5554

demulliken@aol.com

### PUBLICITY

Pat McMorrow 650-348-5049

pbackdoorart@aol.com

### EXHIBITS

Pat Knowles 650-347-9404

flrgirl@mac.com

Diana Day-Glynn 650-678-0850

dayglynn@aol.com

### HOSPITALITY

Nancy Stirm 650-579-2794

painting-crow@comcast.net

### HOSPITALITY ASSISTANT

Marilynne Genis 650-692-0409

mgenis@me.com

### WEBSITE EDITOR

Sofia Medeiros 650-689-5111 smede98@gmail.com

### PALETTE EDITOR

Jenee` Crayne monopodlove@mac.com

### MONTHLY AWARDS

Brian Harvey 650-347-7252

hopeandbrian605@gmail.com

### HISTORIAN

Fred Sinclair 650-343-4453

### ADVISOR

Don Mulliken 650-342-5554 damulliken@aol.com

### BAS SCHOLARSHIP

Teresa Silvestri 650-654-2766 TeresaPPup@aol.com

Up Next...

## *Music in the Park*

BAS will take part in Music in the Park at  
the Burlingame Rec

each Sunday afternoon in July.

Members are welcome to bring work to  
show and are encouraged to use the time  
and space to sit and paint and interact with  
the public.

Questions? call Pat McMorrow.

. . .

## The Peninsula Museum of Art

Opened on March 16

Please drop by to visit at

1777 California Drive, Burlingame  
and go to

[www.peninsulamuseum.org](http://www.peninsulamuseum.org)  
for additional information.

. . .

Next B.A.S Meeting

Wednesday, June 5, 2013

7:00 - 9:00 p.m

Lions Hall. 900 Burlingame Ave., Burlingame

Members, guests and the  
general public are invited.

Light refreshments will be served.

# A message from the President...

## Happy Spring Everyone!

Our Spring Art Show worked out quite well. The show was smaller than last year, but the public enjoyed what was available. The winning paintings are now hanging in the windows at 1426 Burlingame Avenue. We asked the visiting public to vote for their favorites and the winner of this Public Popular Vote was Nancy Stirm, followed closely by Susan Pizzi. Congratulations to you both!

The best news is...we have a volunteer for the office of President, Susan Pizzi. Because Susan was elected Secretary that position is now vacant. Are you interested? Please be in touch with Leona Moriarty or me soon so that we can fill both jobs with a Special Election at the June 5th meeting. **THANK YOU SUSAN!**

Nancy Stirm will be the featured artist at the President's Table at our June meeting. She will be showing some of the beautiful, creative trees she has decorated. She might even be persuaded to part with one or two.

This is my last note to you as your president. I have enjoyed this experience very much, learned a good deal and come to know many of you much better. I would encourage all of you to take part in the workings of BAS. You will feel a much closer bond to the organization and members if you become part of the Committee and what it does to make the group "work". Thank you for these two years. I know Susan will excited to welcome your support as she carries on the leadership of BAS.

Pat

## Plan Ahead:

### Music in the Park:

Sunday, July: 6, 13, 20, and 27

. . .

### The June Committee Meeting

June 11, 2013

4:30pm

393 Georgetown, San Mateo

. . .

## New for 2013

Free Website Links are now included with your BAS membership.

If you would like to include your "art only" website, please contact Sofia Medeiros

[Smede98@gmail.com](mailto:Smede98@gmail.com)

. . .

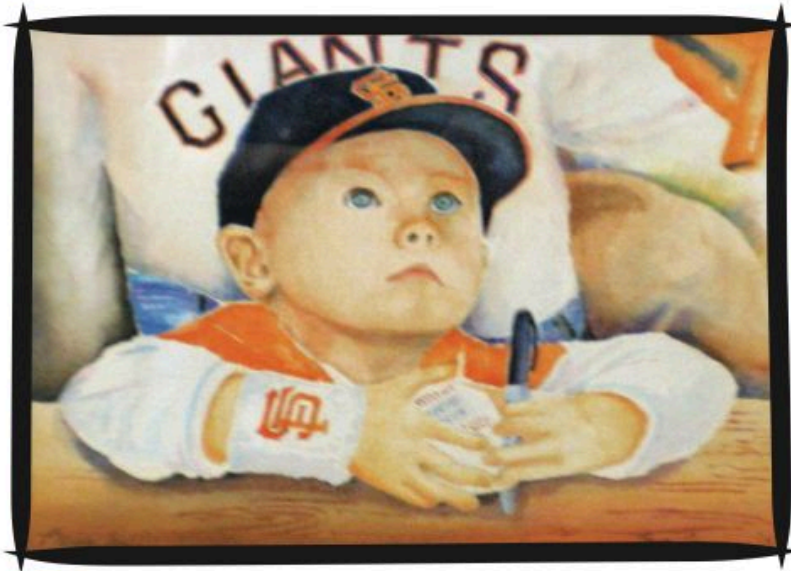
## Missing

If you see this love collage...



please contact artist:  
JD Crayne, [craynejd@gmail.com](mailto:craynejd@gmail.com)

Thank you



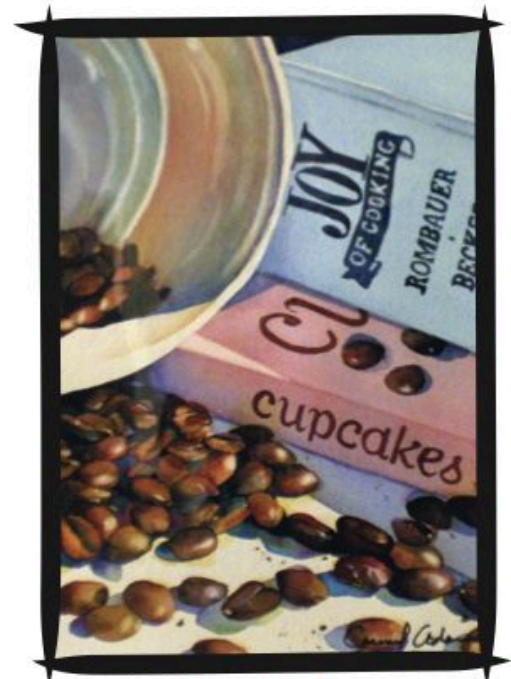
First Place  
by: Gary Holm

# May Ribbon Winners!

Photographs by: Diana Day Glynn



Second Place  
by: Gay Gentry



Third Place  
by: Carmel Adams



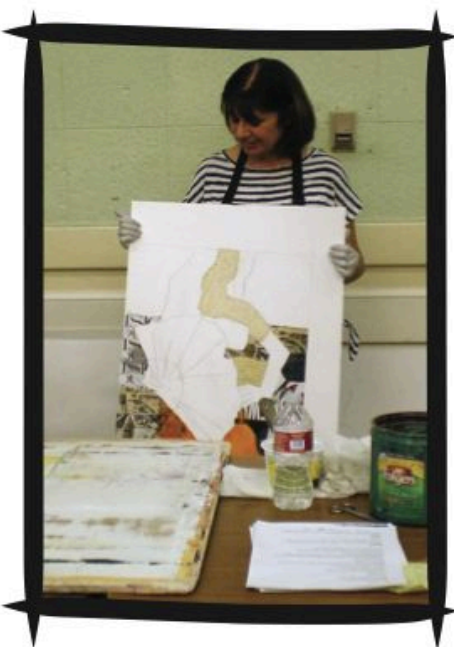
Popular Choice by: Pat Barr



Honorable Mention  
by: Fred Sinclair



## BAS Spring Show's Best of Show - Jacquelyn Gray



Belinda Lima combines collage and acrylic paint to create semi-abstract pictures. For the demo she chose as inspiration a photo she had taken at the deYoung's Gautier exhibit of a model with a fan.

She abstracted the image into basic shapes which she drew onto 300 pound watercolor paper and made a tracing of her drawing. She cut out various shapes of black and white printed paper for the background and glued them to the watercolor paper with a combination of 1/3 gloss medium, 1/3 matte medium and 1/3 water. Using the tracing as a pattern she cut out and glued colored tissue paper and treated newsprint to complete the figure, fan and dress. She would later "finish" the piece with acrylics.

**BURLINGAME ART SOCIETY  
P.O. BOX 1754 BURLINGAME, CA 94010**



[WWW.BURLINGAMEARTSOCIETY.ORG](http://WWW.BURLINGAMEARTSOCIETY.ORG)